



**Western
Sydney
Airport**



Airport Construction Update

July 2022

Dear Neighbour,

Construction of the Western Sydney International (Nancy-Bird Walton) Airport is well underway and on track to open to international, domestic and cargo services in late 2026. Since commencing construction in September 2018, the project has transformed significantly, with over 90% of the Major Earthworks package now complete and construction of the Airport Terminal underway. Over the coming months, our Major Earthworks contractor will complete and hand over portions of their site to the Airside Civil and Pavements Works team and Landside Civil and Building Works team.

Major Earthworks

Since commencing Major Earthworks in March 2020, Western Sydney Airport's (WSA) contractor, the CPB Acciona Joint Venture, has **moved almost 23million cubic metres of earth** to prepare the base of the new Airport.

Completed work

Since our last project update, the project team has:

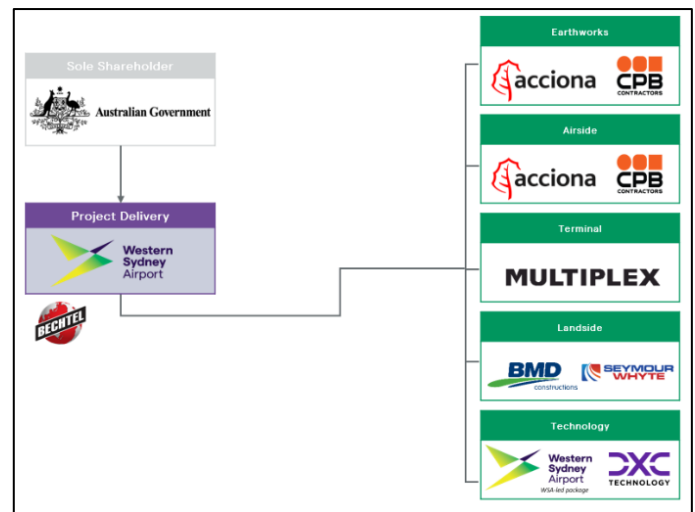
- Relocated site offices to the south-western end of the site, unlocking the remaining parcel of earthworks to be completed.
- Relocated the Badgerys Creek Road and Pitt Street roundabout and added an additional 'leg' to create a new site access.

Since commencing work in March 2020, the project team has:

- Placed over 2.4 million cubic metres of imported sandstone from tunnelling projects across Sydney to prepare the foundation of the site.
- Completed 48% of permanent landscaping.
- Completed over 1.8 million square metres of spray seal on the runway and taxiways ready for the Airside Civil and Pavements team to begin asphalt and concrete paving over the top later this year.
- Installed over 22 kilometres of internal fencing to separate the different work packages.

Ongoing construction activities

- Layering of imported sandstone material on the areas that will be the runway and taxiways.
- Bulk earthworks with large earthmoving plant.
- Installation of permanent airport drainage across the site.
- Spreading of topsoil and landscaping activities.
- Water treatment and dewatering activities.
- Survey and geotechnical works.
- Internal fencing works.



WSA's major works packages have all been awarded to Tier 1 contractors with extensive credentials in delivering airport projects

Adams and Anton Road Upgrade

The upgrade of Adams Road and Anton Road is progressing well, and we are still on track to reopen Adams Road in September 2022.

The existing pavement of the road has been milled and box excavation has started. Over the next few months, the base of the new road will be built up and compacted in layers to prepare the foundation ahead of paving and asphaltting work.

We are working closely with utility providers who will upgrade services along Adams Road at the same time as our work, in an effort to minimise disruption to residents and the local community.



Anton Road looking north, box excavation work and culvert installation underway

Airside Civil and Pavements (ACP)

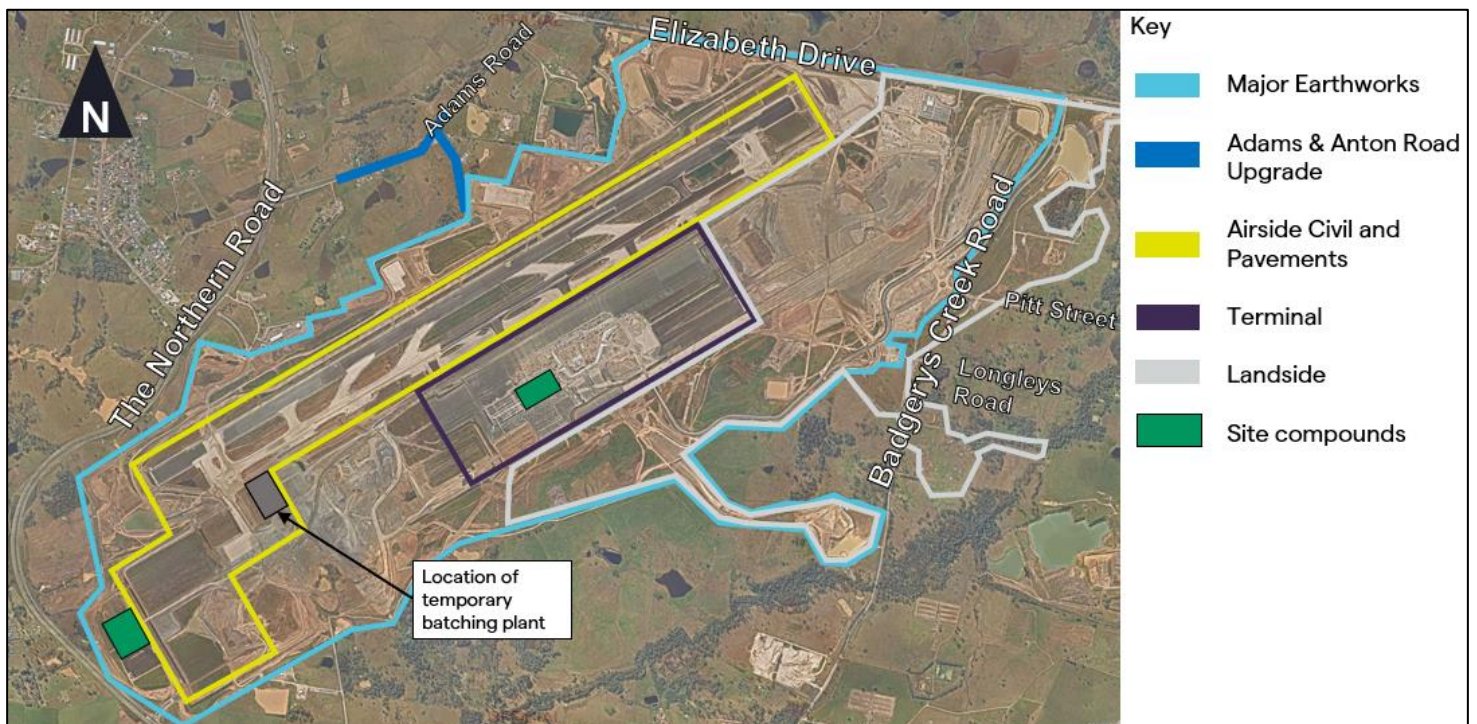
The CBP Acciona Joint Venture will deliver the Airside Civil and Pavements (ACP) Works package which will involve the design and construction of the airside services and utilities, including the 3.7km runway and taxiways, aircraft pavement markings, airside roads, surface water drainage, aeronautical ground lighting systems, and airside security fencing and landscaping.

Upcoming construction activities

- Site establishment works, including the setup of site offices and amenities for workers. The ACP team will be based out of the same offices as the Major Earthworks team.
- Site investigation works including site surveys and geotechnical investigations.
- Construction of temporary haul roads.
- Mobilisation of a temporary concrete batching plant to allow concrete to be produced on site.



The 'start' or 'end' of the runway looking south-west. Planes will be able to take-off and land from either end



Site overview and location of project boundaries

Terminal Construction

Work on the terminal site has been in full swing since WSA's contractor, Multiplex, commenced on site in November 2021. Since our last update, the foundations of the terminal structure have shaped up quickly with a number of key construction activities progressing.

Over the past few months, the project team has:

- Completed 100% of the piling for the terminal basement.
- Completed 40% of the basement concrete slab (slab on ground).
- Poured the first slab on ground for the western pier
- Completed 50% of the basement retaining wall in the south and western pre-cast retaining walls.
- Commenced in-ground services on the terminal apron.
- Commenced work on the aviation fuel line, with 800m of pipe welded to date.

Over the next few months, construction activities will include:

- Completing the in-ground services for the terminal and loading dock.
- Commencing the first suspended slab (Level 00 – Arrivals Level).
- Commencing the seconded suspended slab (Level 2 – Departures Level).
- Ongoing concrete pours for the western pier (international slabs).
- Commencing on-site batch plant operations.
- Removing the formwork in the terminal basement to enable preparations for the installation of the baggage handling system later in the year.
- Backfilling the southern portion of the terminal.



Aerial photo of the terminal basement, taken May 2022

Landside Civil and Building Works Package

The contract for the Western Sydney International (Nancy-Bird Walton) Airport Landside Civil and Building Works package has been awarded to the AeroWest Joint Venture, a joint venture between BMD Constructions and Seymour Whyte Constructions.

The Landside and Civil Building Works package will involve the construction of roads and their connections to external roads and car parks, connections to external utilities, and landside infrastructure and facilities.

Site establishment works will commence this month, including set up of the AeroWest JV site office and amenities for workers, internal access roads and delivery of machinery.

2022 Community Open Day - Highlights

On 26 June 2022, WSA in partnership with our contractors welcomed hundreds on visitors to step behind the gates and onto the construction site of Western Sydney International for an exclusive, free and family friendly day.

Visitors were able to get up close and personal with some of the largest machinery building Sydney's new airport, sample some traditional bush tucker and take a bus trip down the runway and past the terminal construction site!

We were overwhelmed with the interest in the day and we are looking forward to hosting more Open Days for the community as we progress with construction.



Standard Construction Hours

Monday to Friday: 7am – 6pm
Saturday: 8am – 1pm

Our works are generally carried out within standard construction hours, however, there may be certain activities or unavoidable circumstances which will require out of hours work.

Out of hours works

Major Earthworks out of hours works will continue for the length of the project (November 2022), due to ongoing impacts from wet weather and COVID-19. Ongoing and upcoming out of hours activities on the Major Earthworks project include:

Earthworks activities

Monday to Friday: 5am – 8pm
Saturday: 6am – 5pm (where required)

Rock crushing

Monday to Friday: 5am – 8pm
Saturday: 6am – 5pm

Sandstone importation

Monday to Sunday: 24 hours

Machinery maintenance activities:

Monday & Sunday: 5am – 11pm

Fencing installation:

Monday to Friday: 24 hours
Saturday & Sunday: 6am – 5pm

Oversized deliveries/removal of machinery:

Monday to Sunday: 24 hours

Other minor works determined not to have any impact on the community:

Monday to Sunday: 24 hours

It is predicated some residents may notice the above out of hours works, however we will endeavor to minimise impact on the local community as best as possible.

For more information about our out of hours works, including the location, timing the machinery and equipment used, please contact our Community Engagement team on 1800 972 972.

Contact us

For further airport information or enquiries about our construction activities, or if you'd like to raise any concerns, please contact our information line on 1800 972 972 or send an email to info@wsaco.com.au.

Visit us

The Western Sydney International Experience Centre located at 100 Eaton Road, Luddenham NSW, is open to the public Monday to Wednesday, Saturdays and Sundays. Bookings are no longer essential but if you have a preferred day and time, please get in touch.

If you are having difficulty understanding this document, please call the Translating and Interpreting Service (TIS) on 131 450 and ask them to contact WSA on 1800 972 972.
هل تحتاج إلى مترجم؟ يرجى الاتصال بخدمة الترجمة الخطية والشفهية (TIS) على الرقم 131 450 واطلب منهم الاتصال بمطار غرب سدني (WSA) على الرقم 1800 972 972.
क्या आपको दुभाषिए की ज़रूरत है? कृपया अनुवाद एवं दुभाषिया सेवा (Translating and Interpreting Service) (TIS) को 131 450 पर फोन करें और उनसे WSA से 1800 972 972 पर संपर्क कराने के लिए कहें।
您需要口译吗?请打电话131 450给翻译口译服务处 (TIS),请他们打电话1800 972 972跟WSA联络。
您需要口譯嗎?請打電話131 450給翻譯口譯服務處 (TIS),請他們打電話1800 972 972跟WSA聯絡。
Cần một thông dịch viên? Hãy gọi đến Dịch vụ Phiên dịch và Thông dịch (TIS) qua số 131 450 và yêu cầu họ liên lạc WSA qua số 1800 972 972.



If you wish to receive these notifications via email, please send an email to info@wsaco.com.au with your name, best contact number, address and preferred email address or use the QR code to register.

Did you know?

99.5% of construction water used on the Major Earthworks site is from recycled sources and up to ten megalitres of water is used each day for dust suppression and general construction activities.

