

# Potential out of hours works

## WSI Landside Works Package

October 2024

Western Sydney International (Nancy-Bird Walton) Airport (WSI) will be Sydney's first 24 hour domestic, international and cargo airport. Opening in late 2026, WSI will cater to 10 million passengers a year, eventually growing to become Australia's primary gateway.

The Landside works package involves the design and construction of car parks, roads, bridges, utilities connections, landscaping and other landside facilities.

### **Out of hours works**

Our Landside contractor, AeroWest is a joint venture between BMD and Seymour Whyte Constructions, who will be carrying out works on a section of Badgerys Creek Road outside of standard construction hours (i.e. Monday to Friday 7am – 6pm and Saturday 8am – 1pm).

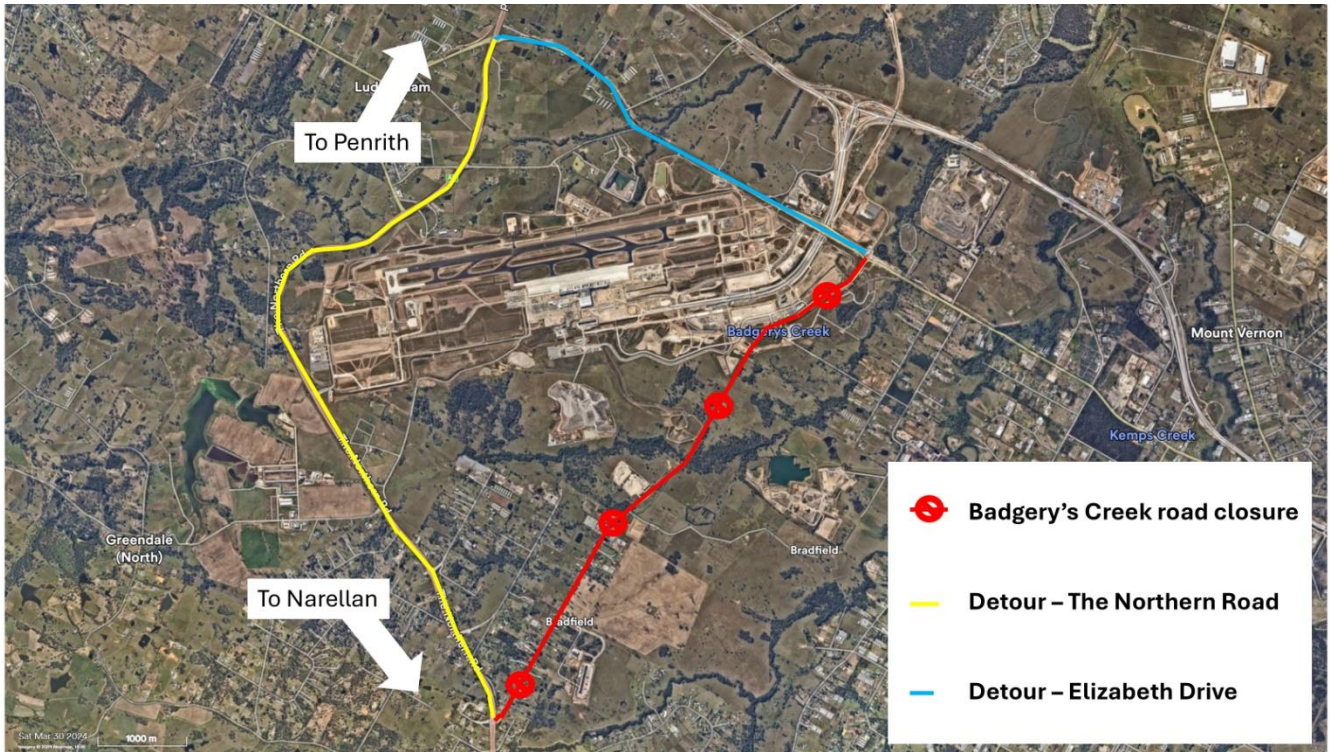
This is for the Sydney Water pipeline relocation under Badgerys Creek Road which requires excavation works to be completed at night from 6am Saturday 19 October 2024 to 6am Sunday 20 October 2024. During this time, Badgerys Creek Road will be closed to traffic with detour routes in place (attached map indicating closure points). Please note, there will be access beyond the closure points for local traffic only.

The out of hours works (OOHW) will only be used in the event of delays to the construction program because of unplanned issues like poor weather. Contingency dates have been put in place from 26 October 2024 to 11 November 2024 (weekends only).

Our contractor will be required to carry out noise monitoring in the times outside of standard construction hours.

Thank you in advance for your patience while this work is completed.

WSI Community Engagement Team



### More information

Please contact the WSI Community Engagement Team if you would like to discuss these works. You can do this by emailing [info@wsaco.com.au](mailto:info@wsaco.com.au) or you can call our information line on 1800 972 972.